

EXPF SERIES OUTDOOR LIGHTS

EXPF-30W-50K
EXPF-30W-60K
HAZARDOUS LOCATION FLOOD/HIGHBAY LIGHTS

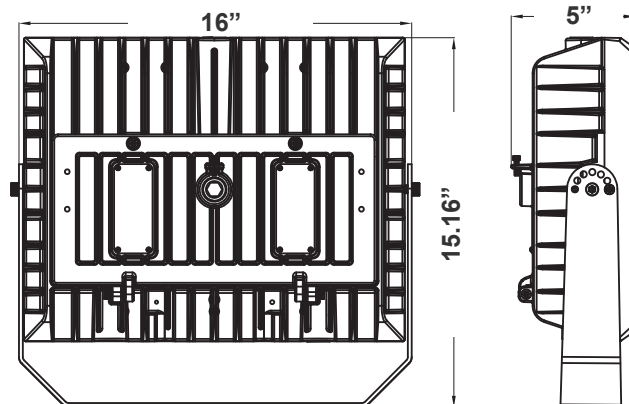
WESTGATE
THE FUTURE IS HERE...AND IT'S QUITE BRIGHT!



Customer Name: _____

Project Name: _____

Note: _____ Type: _____



15.16"(H) x 16"(W) x 5"(D)

Ideal for Stadium lighting, Sports fields, parking lots, docks, railway and container yards, Architectural lighting, Industrial and commercial exterior lighting, trade shows, exhibitions

Features

- 7-year Warranty
- Lens: Clear Glass
- Aluminum Alloy Housing
- UL ANSI/UL 844, "Luminaires for Use in Hazardous (Classified) Locations.
- UL E503444 Class I, Division 2, Groups A, B, C and D, Luminaires for HazLoc

Technical Specifications

Electrical:

- Voltage: 120-277V AC 60Hz
- Wattage: 30W
- Power Factor: >0.9
- THD: ≤20%
- Efficacy: 140LPW

Mechanical:

- Aluminum Alloy Housing With Power Coat Finish
- Gray Finish
- UL ANSI/UL 844, "Luminaires for Use in Hazardous (Classified) Locations.
- UL E503444 Class I, Division 2, Groups A, B, C and D, Luminaires for HazLoc
- Cord type: 2' SJTW 18/3 AWG Cable
- Operating Temperature: -22°F to 122°F
- IP Rating: IP68, Suitable for Wet Locations
- 7-year Warranty

Lighting:

- Lens: Clear Glass
- LED: Bridgelux / SMD3030 (1W)
- Total Lumens: 4200LM
- Color Temperatures: 5000K, 6000K
- Color Rendering Index: CRI >70
- Rated Life: 70,000 Hrs
- Beam Angle: 140°×120°

Applications:

- Warehouse, factory and workshops
- Petroleum and petrochemical area, and gas station
- Power, railway, ship port, public security, fire protection and other fields

- 60W | 8400LM | EXPF-60W-50K

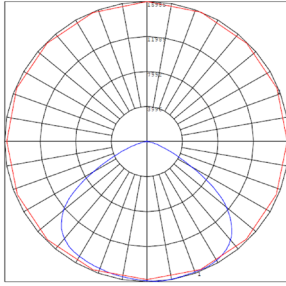
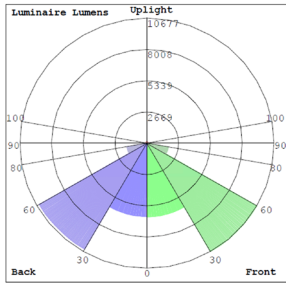


Phone: (877) 805-2252 | Fax: (877) 805-2252
www.westgateimg.com |

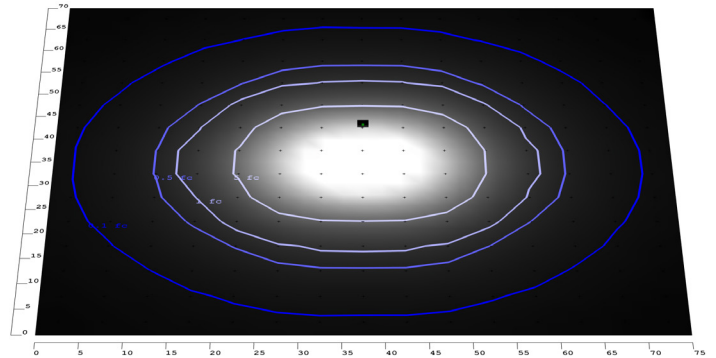


WG-20240325

Photometrics: EXPF-30W

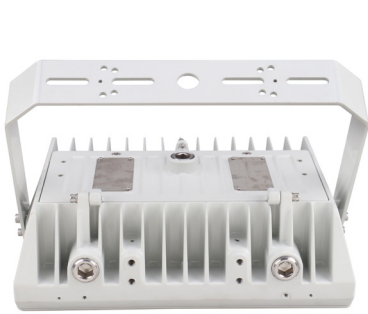


BUG Rating: B5-U3-G3



100W 5000K, Area 70'x 75' Mounting Height: 9'

Other Views:



Side View



Front View



Back View

Performance Table: EXPF-30W

MODEL NO.	Wattage	Voltage	Lumens	Color Temp.	BUG Rating	LPW
EXPF-30W-50K	30W	120~277V	4200LM	5000K	B5-U3-G3	140
EXPF-30W-60K				6000K		

Sample Ordering

Model **Watt** **Color Temp.**

EXPF - 30W -

50K = 5000K
60K = 6000K

